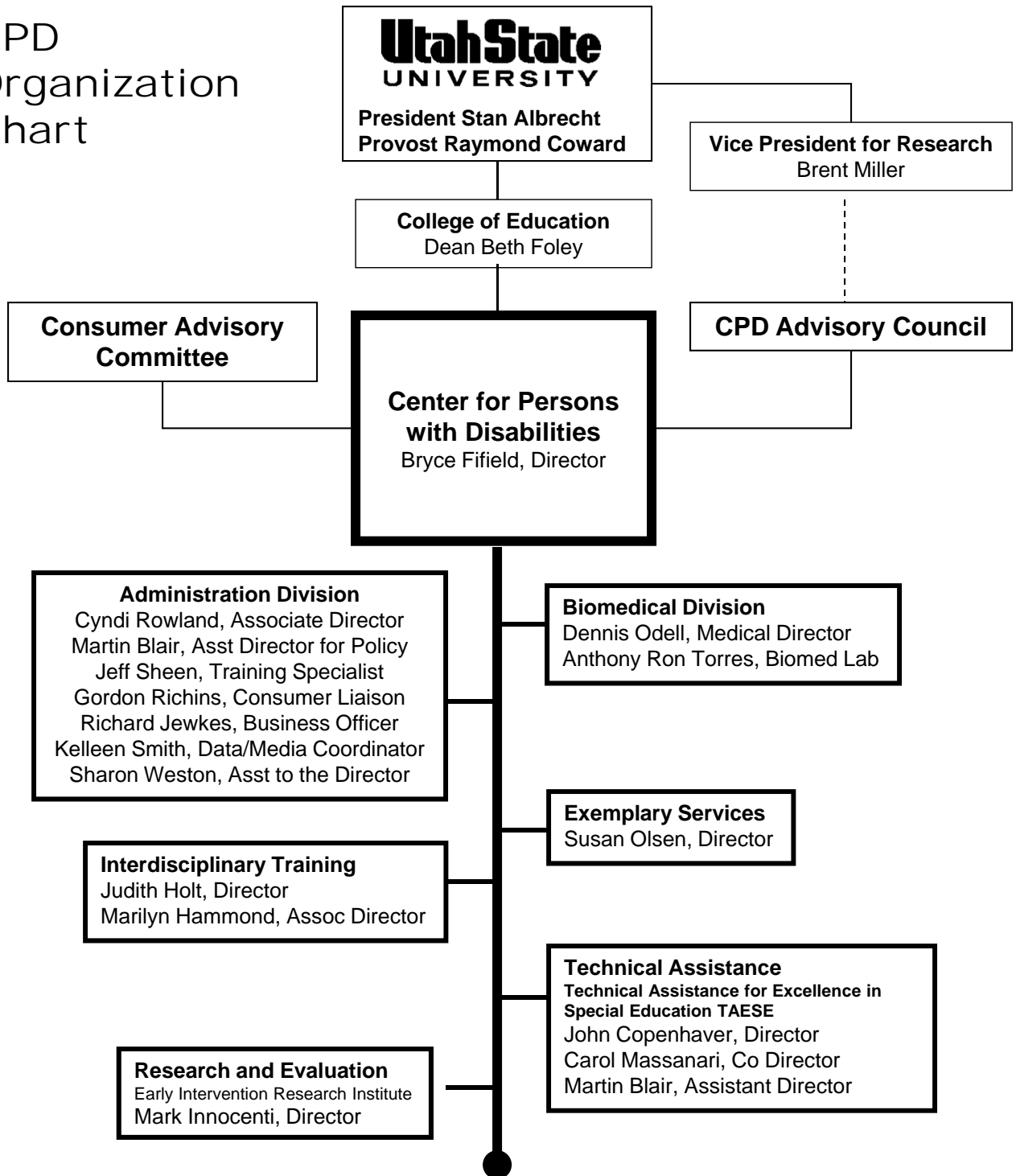


CPD
Organization
Chart



Utah State
UNIVERSITY
President Stan Albrecht
Provost Raymond Coward

Vice President for Research
Brent Miller

College of Education
Dean Beth Foley

Consumer Advisory Committee

CPD Advisory Council

Center for Persons with Disabilities
Bryce Fifield, Director

Administration Division
Cyndi Rowland, Associate Director
Martin Blair, Asst Director for Policy
Jeff Sheen, Training Specialist
Gordon Richins, Consumer Liaison
Richard Jewkes, Business Officer
Kelleen Smith, Data/Media Coordinator
Sharon Weston, Asst to the Director

Biomedical Division
Dennis Odell, Medical Director
Anthony Ron Torres, Biomed Lab

Interdisciplinary Training
Judith Holt, Director
Marilyn Hammond, Assoc Director

Exemplary Services
Susan Olsen, Director

Research and Evaluation
Early Intervention Research Institute
Mark Innocenti, Director

Technical Assistance
Technical Assistance for Excellence in
Special Education TAESE
John Copenhaver, Director
Carol Massanari, Co Director
Martin Blair, Assistant Director



Persons with Disabilities

Administration

Bryce Fifield, Director
Cyndi Rowland, Associate Director
Martin Blair, Asst Director for Policy
 Richard Jewkes, Business Officer
 Jeff Sheen, Training Specialist
 Gordon Richins, Consumer Liaison
 Kelleen Smith, Data Coordinator
 Sharon Weston, Assistant to the Director

Special Centers, Initiatives and Programs

Autism Support Services
 Child Care Nutrition Program
 Early Childhood Alternative Education Program
 ADA Research and Training
 Indian Children's Program
 Interagency Outreach Training Initiative
 KSAR
 NCDAAE – Project GOALS and Project Steppingstones
 PEER Program
 Utah Assistive Technology Program
 Utah Assistive Technology Fabrication Laboratory
 Assisting Utah Women w/Disabilities Who are Victims of Violence
 WebAIM

Divisions and major projects

BIOMEDICAL

Dennis Odell, Medical Director
Anthony R. Torres, Biomedical Lab

- Medical and Specialty clinics
- Medical Home
- ADHD/Autism Research
- Molecular Markers in Preterm Birth

EXEMPLARY SERVICES

Sue Olsen, Director

- Up to 3 Early Intervention
- TOP Sports and Leisure
- Virtual Home Visits
- Becoming Leaders for Tomorrow
- Clinical Services
- Bear River Adult Skill Center

INTERDISCIPLINARY TRAINING

Judith Holt, Director
Marilyn Hammond, Associate Director

- Interdisciplinary Training and Service Learning
- URLEND
- Coordinated Family Support – Medical Home
- National Medical Home
- TA to CMS Grantees
- Traumatic Brain Injury
- Utah One-Stop Enhancement Project (Family Disability Support Center)
- Future Leaders in Speech/Language Pathology and Audiology
- Alcohol/Drug Abuse Survey
- Family to Family Health Education Center Evaluation
- SILC Net
- Utah SSDI Benefits Offset Pilot Project
- Multi-disciplinary Consortium – Visual Impairments
- Utah Assistive Technology Foundation
- Playground Design Guides – Play Corp
- RTOI: Birth Certificates – Follow-up of Newborn Screening
- Southwest DBTAC Center, Region 6
- Faith based training – Disability awareness
- Emergency Preparedness for Spanish Speaking

RESEARCH AND EVALUATION

Early Intervention Research Institute
Richard Roberts, Director
Mark Innocenti, Associate Director

- Champions for Progress Center
- National Children's Study
- Evidence-based Treatment Guidelines for Children with ADHD
- Evaluation of Early Reading First
- Storytelling for Home Enrichment in Literacy and Learning Skills
- Using Technology for Emergent Literacy and Learning
- Food Stamp Low Utilization Study
- Rocky Mountain Public Health Education Consortium
- Eval of K-3 Plus Implementation, Progress and Children's Learning in New Mexico
- Strengthening Early Childhood Education in Jordan
- Infant Massage w/Down Syndrome
- Infant Massage in Orphanages in S Africa
- Early Childhood Professional Development in Utah

TECHNICAL ASSISTANCE

Center of Technical Assistance for Excellence in Special Education (TAESE)
John Copenhaver, Director
Carol Massanari, Co Director
Martin Blair, Assistant Director

- Mountain Plains Regional Resource Center
- BIE Special Education Advisory Board
- BIE Procedural Safeguards
- TA to State Offices of Special Education
- Mid Continent Comprehensive Center
- TA on Positive Behavioral Interventions/Supports
- Transition Outcomes Project
- The Arizona Center for Professions in Education
- Assessment System for K-12 Educ Interpreters